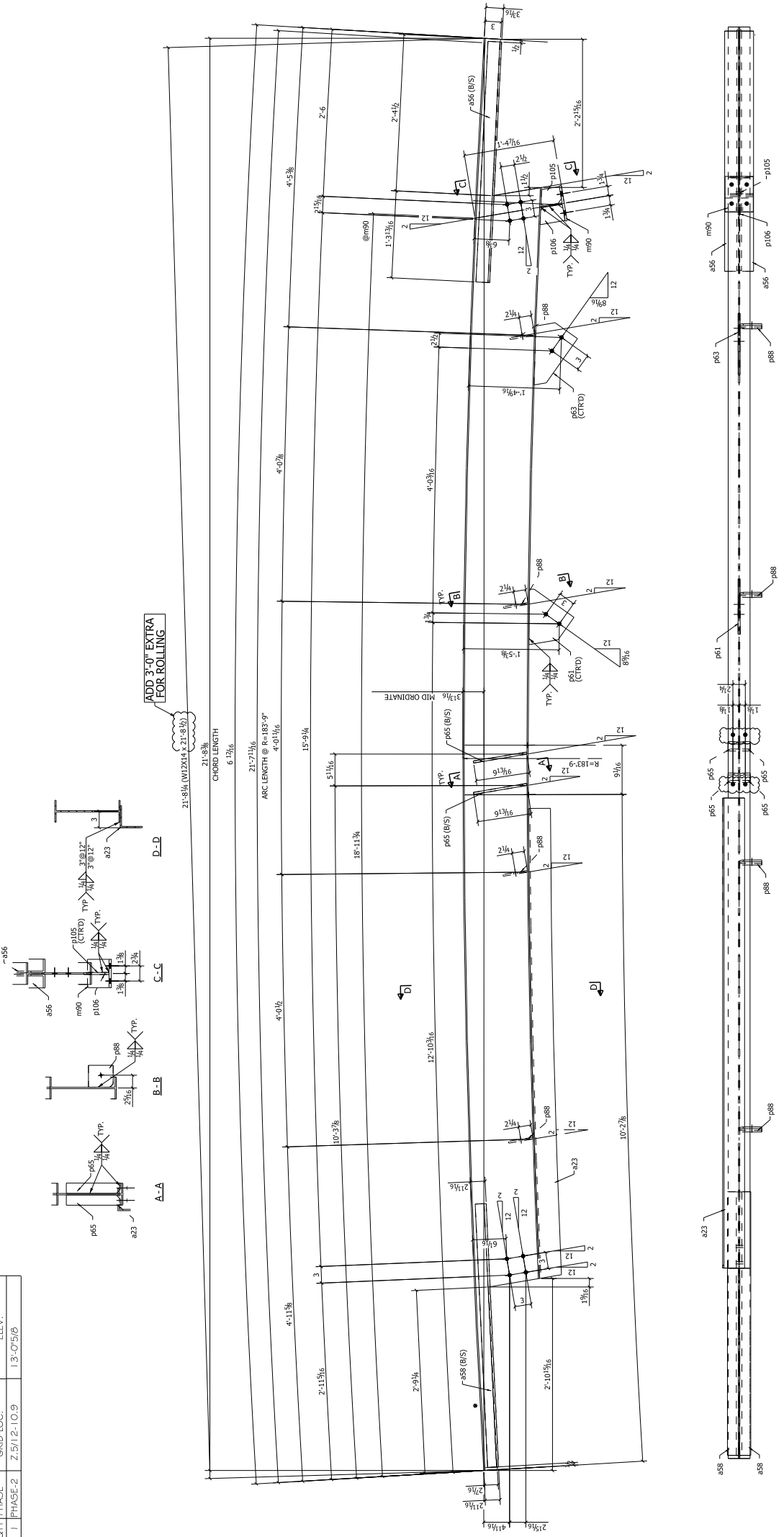


QTY	PHASE	GRID LOC.	ELEV.
1	PHASE-2	Z.5/12-10.9	13'-0"5/8



ALL COPIES TO BE CUT WITH  
1/4" RADIUS, RADIUS NOT SHOWN  
IN DRAWING FOR CLARITY.

NO PAINT WITH IN 3"  
OF HOLES.

QTY	PRICE	DESCRIPTION	LENGTH	REMARKS	UNIT
EA.	PER		TOTAL		AMOUNT
1	1	2B5	21'-0 1/2"	307	AS95 OR-50
1	1	a23	7'-1 1/2"	47	ROLLED
2	2	a56	5'-7 13/16"	36	ROLLED
2	2	a55	2'-11 15/16"	37	AS95 OR-50
1	1	m90	5 1/8"	11	AS95 OR-50
1	1	p63	10 1/8"	6	
1	1	p65	11 7/16"	6	
4	4	p65	9 13/16"	6	
4	4	p88	4 1/2"	6	
1	1	p105	3 13/16"	1	
1	1	p106	4 5/8"	1	

BILL OF MATERIAL

ONE - BEAM - 2B5